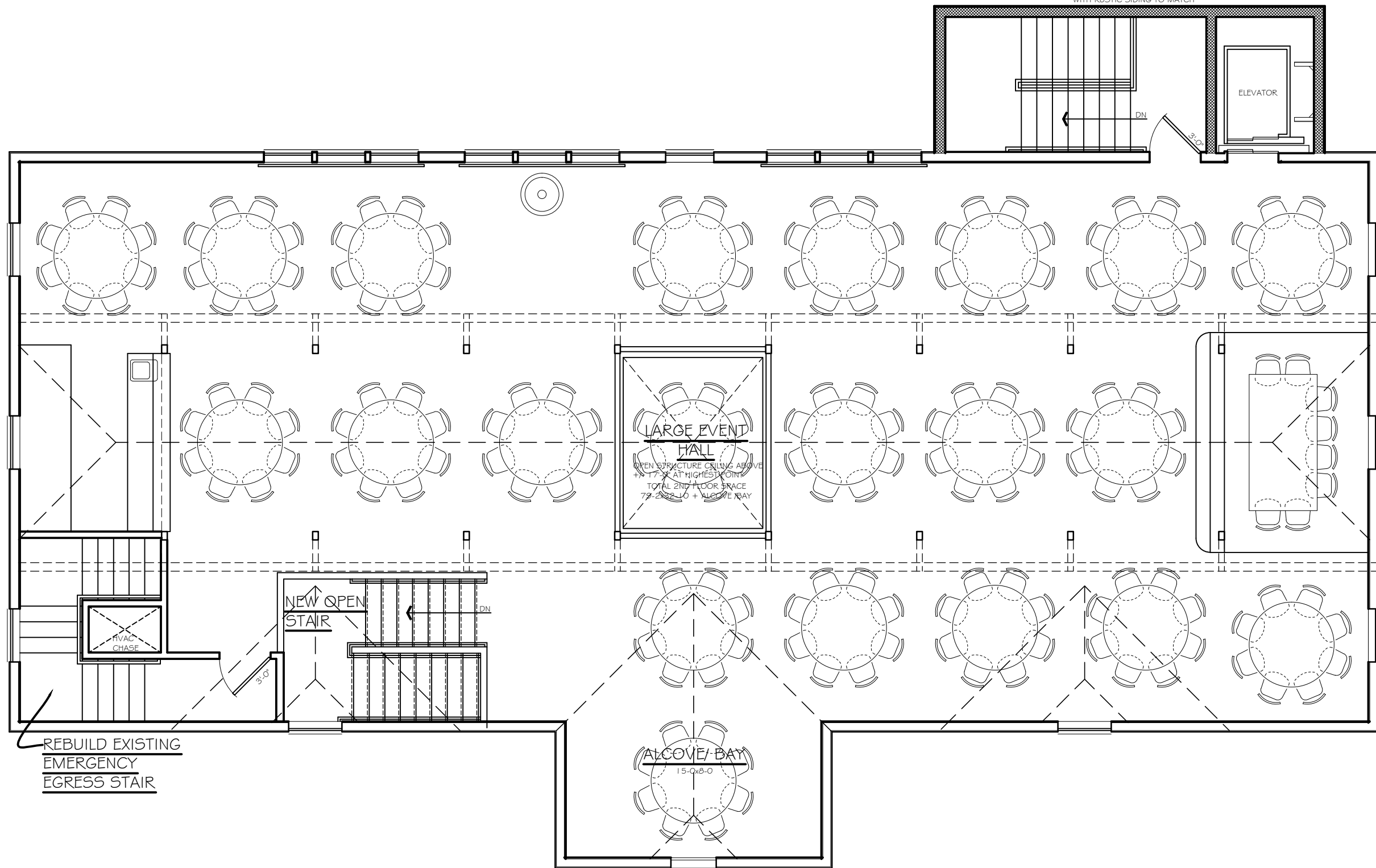


**NEW EGRESS STAIR & ELEVATOR**

ELEVATOR AND STAIRWAY WITH  
FIRE-RATED CONSTRUCTION COVERED  
WITH RUSTIC SIDING TO MATCH



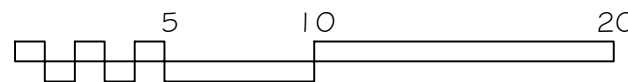
REBUILD EXISTING  
EMERGENCY  
EGRESS STAIR

LARGE EVENT  
HALL

OPEN STRUCTURE CEILING ABOVE  
+/- 17'-0" AT HIGHEST POINT  
TOTAL 2ND FLOOR SPACE  
79'-2 1/2" LO + ALCOVE BAY

ALCOVE/BAY  
15'-0" x 8'-0"

**BARN  
REMODELED  
SECOND FLOOR PLAN**



NORTH

2,838 S.F. EXISTING  
195 S.F. ADDITION  
3,033 S.F. TOTAL